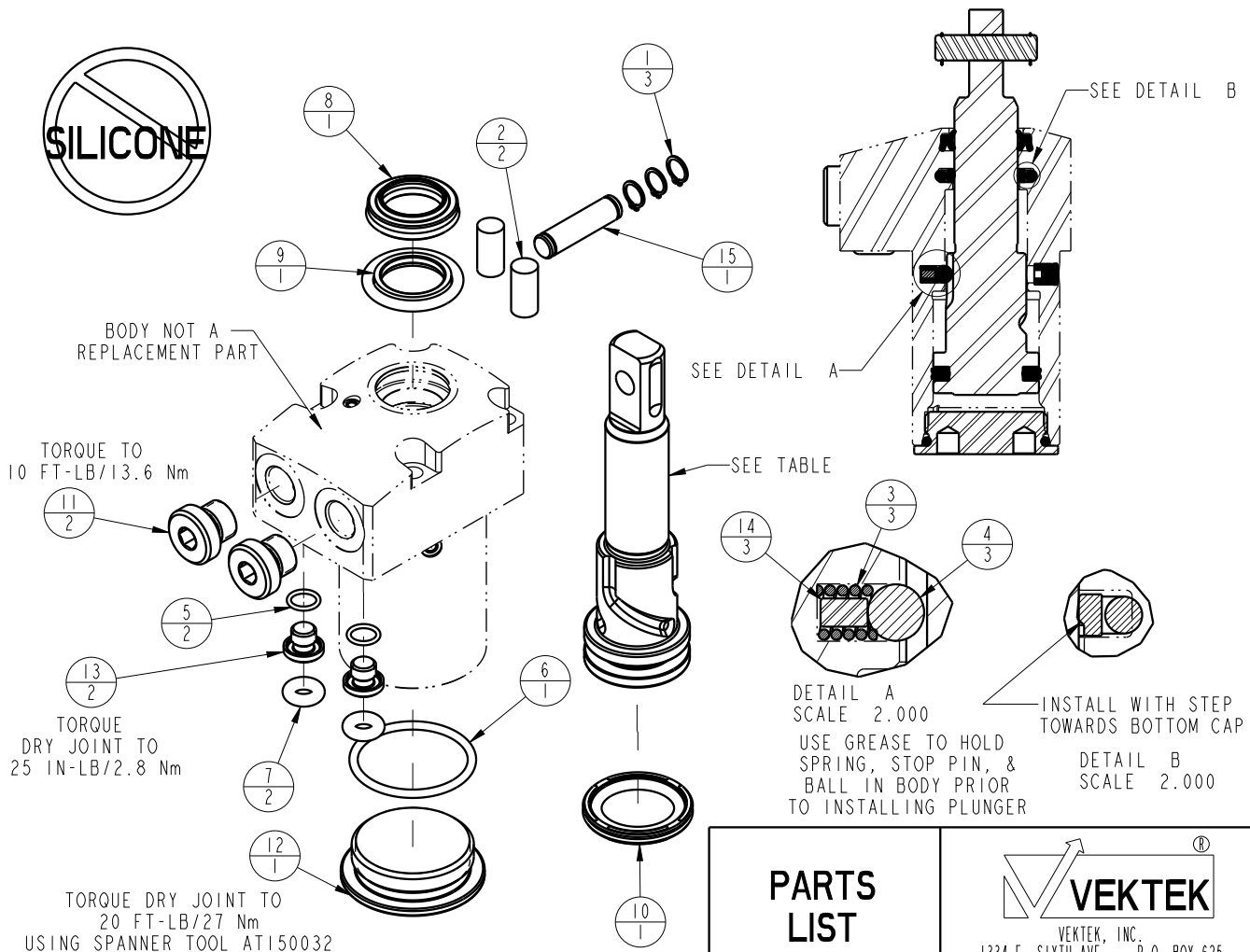


ASSEMBLED MODEL NO.	PLUNGER PART NO.	CAM STYLE	ASSEMBLED ORIENTATION	NO	QTY	PART NO	DESCRIPTION	SEAL KIT	CLEVIS PIN KIT
LI-4025-10-S-0	81400211	STR	0	1	3	23050032	RING, RTNG, EXT, 0.236		X
LI-4025-10-S-60			60	2	2	23340001	STOCK, CORD, .25 X .50, 50, NBR		X
LI-4025-10-S-120			120	3	3	23350085	SPRING, COMPRESSION	X	
LI-4025-10-S-30	81400241	STR	30	4	3	23650009	BALL, TUNGSTEN-CARBIDE, 4mm	X	
LI-4025-10-S-90			90	5	2	39051079	O-RING, (6mm X 1)	X	
LI-4025-10-S-150			150	6	1	39051081	O-RING, (26mm X 2)	X	
LI-4025-10-L-0	81400221	LH	0	7	2	39051087	O-RING, (4mm X 3)	X	
LI-4025-10-L-60			60	8	1	39053041	SEAL, WIPER, SNAP IN, WED, 15, 94A, AU	X	
LI-4025-10-L-120			120	9	1	39056001	SEAL, STEP, ROD, 15	X	
LI-4025-10-L-30	81400251	LH	30	10	1	39056021	SEAL, CAP, PISTON, 25, 90A, AU GRPHT FLD	X	
LI-4025-10-L-90			90	11	2	43068004	PLUG, SOCH, G1/8		
LI-4025-10-L-150			150	12	1	81400151	CAP, LC/SC, 7MPa, 25B		
LI-4025-10-R-0	81400231	RH	0	13	2	81400200	PLUG, MANIFOLD, 7MPa, M6		
LI-4025-10-R-60			60	14	3	81400202	PIN, STOP, BALL, METRIC, 4mm BALL	X	
LI-4025-10-R-120			120	15	1	81400271	PIN, ROCKER, SC, 7MPa, 25B		X
LI-4025-10-R-30	81400261	RH	30	N/A	N/A	L6014250	KIT, SEAL, SC, 7MPa, 25B	NOTED	N/A
LI-4025-10-R-90			90	N/A	N/A	L6214250	KIT, CLEVIS PIN, SC, 7MPa, 25B	N/A	NOTED
LI-4025-10-R-150			150						



PARTS LIST		
	VEKTEK, INC. 1334 E. SIXTH AVE. P.O. BOX 625 EMPORIA, KS. 66801 U.S.A.	
ASSEMBLIES AFFECTED SEE ASSEMBLY MODEL NO. TABLE ABOVE	PARTS LIST, ASSY, SC, TF, 7MPa, 25B, CLEVIS	
SIZE A	LPL1424	REV B

B	3273	RELEASE	JDW	08/15/18
REV	IN ACCORDANCE WITH ECN	EFFECTIVE DATE	REVISED BY	DATE
DRW BY: MAJ	DRAWING STATUS: Released			
DATE: 4-16-15	PRODUCTION APPROVED FOR RELEASED STATUS ONLY			